

# TRAINING SESSION 2019

## Railway Public Service Obligation

### PROGRAM INFORMATION

Seoul, Korea  
23-27 September 2019





# OVERVIEW

**1. Title:** Railway Accessibility for the public

**2. Date:** 23-27 September, 2019

**3. Venue:** Seoul and Daejeon, Korea

**4. Target:** Officials or staffs in railway and transport sector of UIC Asia-Pacific members

## 5. Objectives

- To share best practice of railway accessibility for the public
- To find out ways to pursue railway accessibility for the public

## 6. Theme

- Definition and importance of railway service for the public
- Public service of railway: regional line, PSO, etc.
- Balance between public service and profitability
- Safe operation of railway for the public
- Technical development and education for safe railway service

**7. Language:** English

# PROGRAM

## Sunday 22 September 2019

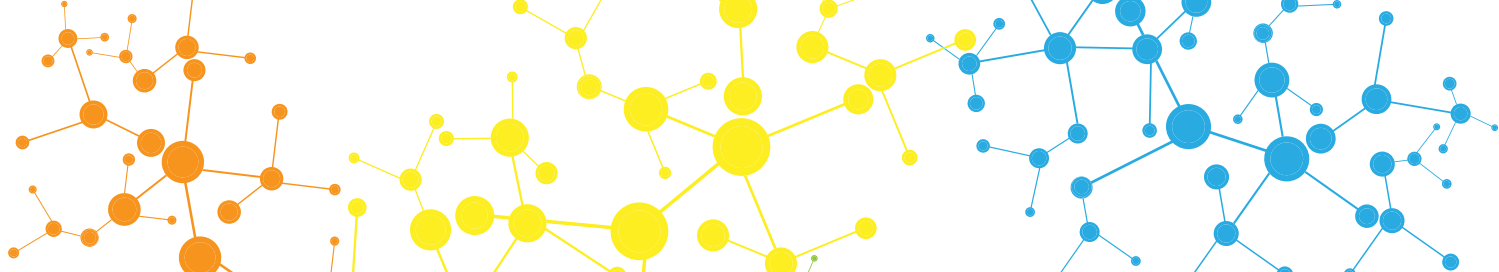
Arrival

## Monday 23 September 2019

09:30	Meeting in the lobby of the Lotte City Hotel to take the bus to go to Seoul Station
10:00-10:10	Introduction of Training Program, Mr. BEOM Inchul, KORAIL, Korea
10:10-10:30	Introduction of UIC, Mr. GUIGON Marc, Director of Passenger Department, UIC
10:30-11:00	Introduction of Korean Railways, Ms. CHOI Misook, KORAIL, Korea
11:00-11:20	Coffee Break
11:20-11:50	Commuter Regional Train Services Mr. GUIGON Marc, Director of Passenger Department, UIC
12:00-14:00	Lunch
14:00-14:40	Case of R&D for technical development in railway system Mr. JUNG Sigyo, Korea agency for infrastructure Technology Advancement, Korea
14:40-15:10	Coffee Break
15:10-16:30	Regional and local Organization for Public Transport (Presentations from the Participants)
16:30-17:30	Technical Visit (Seoul Station) Mr. LEE Gyuyoung, Master of Seoul Station, KORAIL, Korea
18:00	Dinner

## Tuesday 24 September 2019

08:30	Meeting in the lobby of the Lotte City Hotel to take the bus to go to the Seoul Station
-------	---



09:00-10:00	Move to KORAIL HQ by KTX
	Policy and activity for Public Railway Services in Korea
	<ul style="list-style-type: none"> <li>Public service: regional line, PSO</li> </ul>
10:10-11:20	<ul style="list-style-type: none"> <li>Balance between public service and profitability</li> <li>Case of railway service development, tourist train and others</li> </ul>
	<i>Mr. CHO Chinhwan, KORAIL, Korea</i>
11:40-13:30	Lunch
	Best practice of Public Railway Services in Europe
	<ul style="list-style-type: none"> <li>Business Case of PSO in Europe; cost and pricing of contracts</li> </ul>
13:30-14:40	<i>Mr. GIURICIN Andrea, Tra Consulting, Milan Bicocca University, Italy</i>
	<ul style="list-style-type: none"> <li>Railway Passenger Rights Overview</li> </ul>
	<i>Mr. SZARMACH Michal, PKP, Poland</i>
15:00-18:00	Field trip to a station of Korean best practice for public service
	<i>Mr. SONG Ypungchul, Master of Hwanggan Station, KORAIL, Korea</i>
18:00-21:00	Dinner and move back to hotel

## Wednesday 25 September 2019

08:40	Meeting in the lobby of the Lotte City Hotel to go to Seoul Station
	Cases of safety management for public railway service in Korea
	<ul style="list-style-type: none"> <li>Safety Management and principle</li> </ul>
09:00-10:10	<i>AN Byeongho KORAIL, Korea</i>
	<ul style="list-style-type: none"> <li>Maintenance and operation of railway system</li> </ul>
	<i>OH Byungil, KORAIL, Korea</i>
	Management of Public Railway Services in Europe
	<ul style="list-style-type: none"> <li>The Strategic Planning Principles</li> </ul>
10:20-11:30	<i>Mr. FIECHTER Hans Bernhard, BLS, Switzerland</i>
	<ul style="list-style-type: none"> <li>Modelling the business case of a railway operation</li> </ul>
	<i>Mr. GIURICIN Andrea, Tra Consulting, Milan Bicocca University, Italy</i>
11:40-13:00	Lunch
13:00-17:50	Technical visit to KTX and Regional line
18:00-19:00	Dinner

## Thursday 26 September 2019

08:20	Meeting in the lobby of the Lotte City Hotel to take the bus to go to Uiwang city
	Training system to staffs (Educating train drivers)
	<i>Mr. JOO, Changhoon, KORAIL, Korea</i>
09:30-10:40	Communication Management: The Use of the Social Networks in PSO Services
	<i>Mrs. BODELON Magdalena, RENFE, Spain</i>
10:50-11:50	Visit to KORAIL education center (1)
	<i>Train driving simulator (Mr. JOO Changhoon, KORAIL, Korea)</i>
11:50-13:00	Lunch
	Visit to KORAIL education center (2)
13:00-14:00	<i>Railway Safety Experience (Ms. KIM Nayeong, KORAIL, Korea)</i>
14:10-15:20	Move to Seoul
15:30-17:30	Cultural activity (1), <i>Korean fusion performance art based on the traditional story</i>
17:30-21:00	Cultural activity (2), <i>Tour of Korean palace at night</i>

## Friday 27 September 2019

08:20	Meeting in the lobby of the Lotte City Hotel to take the bus to go to Seoul Station
09:00-10:00	Discussion on Railway Public Service Obligation and review of the sessions
10:00-10:30	Coffee Break
10:30-13:30	Certificate Ceremony and luncheon

# MAIN VISITS

## Centralized Train traffic Control Center

KORAIL operates and monitors more than 3,680 km out of 4,138.5 km (89%), the total service length, by Centralized Traffic Control center. The nationwide trains, KTX, conventional and freight train and subway in metropolitan area, are under control of the center.



## Metropolitan Rolling Stock Depot (Goyang KTX depot)

The depot was founded for the whole maintenance of KTX train, which mainly consists of 2 workshops; light and heavy maintenance. All compartments of KTX are reassembled to extend its use life span after detailed maintenance in the shops.



## Seoul Station

Seoul Station has played a critical role in transport of South Korea, linking two main cities; Seoul and Busan. It is an important point of railway network, where high speed train, conventional train and subway.







## Station of Regional Line

KORAIL operates railway service of regional line for daily life of the public. Hwanggan station is one of the best cases for public railway service. Participants will visit the station and discuss how it serves for the public.



## KORAIL Education Center

KORAIL provides education programs on all the sectors such as management, customer service, technical parts and global education to its staffs. Participants of the session are to experience all types of trains including KTX and EMU. And license acquisition process of Korea will be explained.



## Korean cultural activity

KORAIL provides activities for participants to understand Korean culture. They are to visit the traditional palace of Choseon dynasty, existing in the Korean peninsula from 1392 to 1910, and the Korean presidential residence area. Besides, the Korean cultural cuisine and concert are waiting for you. It is subject to change by the current situation.





# REGISTRATION PRINCIPLE

## **Complimentary Offerings for UIC Asia-Pacific members only**

Expenses for **only one person** per Asia-Pacific member will be provided complimentary.

### **A. The expenses are as follows:**

1. Registration fee
2. Economy class airfare (Round trips): a copy of your passport will be required to reserve your airline tickets.
3. Accommodations for 6 nights and 7 days
4. Every meal a day; breakfast, lunch and dinner
5. Local transportation within only the official schedule

### **B. All the other expenses except for “A” are in charge to the participant.**

If a member from UIC Asia-Pacific region wants to send more than one participant, UIC-KORAIL will provide the expenses as follows;

- for one person: 1, 2, 3, 4 and 5 of A
- for others: 1, 4 and 5 of A

## **Registration fee for non UIC Asia-Pacific members: 500 Euros**

### ***Conditions for Participation***

The Training Session is targeted at persons interested in acquiring a comprehensive overview of the Railway accessibility for the public. Due to these principles, the attendance to ALL the sessions is therefore mandatory.



# NOTICE

Each participant is highly required to make a brief presentation of 10 minutes about her/his railway of the topic as follows; (please choose one of them)

- Cases of good activities on railway public service
- Cases of reinforcing railway safety
- Cases of any development for public or safe railway system
- Cases of any training or education program for staff's capacity
- Ongoing railway projects

# ACCOMMODATION

Name of hotel:

LOTTE City Hotel Myeongdong  
(<https://www.lottehotel.com/myeongdong-city/en.html>)

Location:

362, Samil-daero, Jung-gu,  
Seoul 100-220, Korea

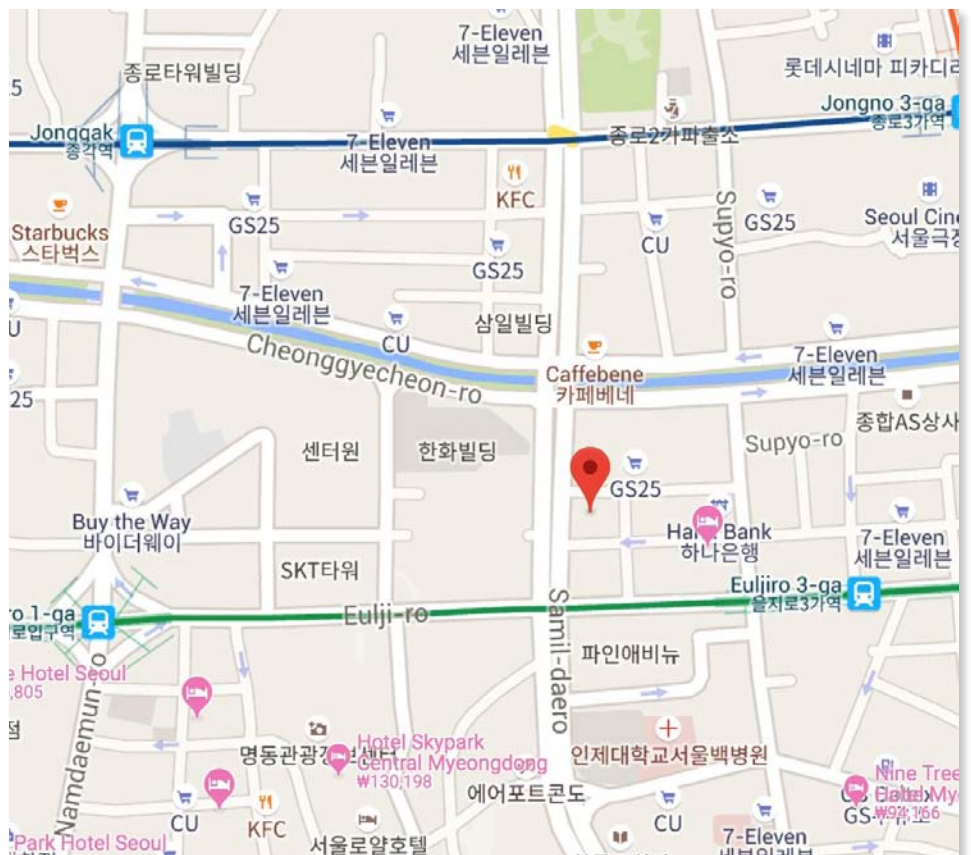
Contact No:

+82-2-6112-1000

How to get to the hotel (Airport  
limousine bus)

Incheon Int'l Airport → Hotel

- Airport Bus: No.6015  
(Boarding : 5B, 12A Stop)
- Duration: About 1 hour 20 mins.
- Stop: Eulji-ro 2ga (Pine Avenue)
- Fare: 15,000 KRW (Around USD 13)





# CONTACT

**Ms. Beatrice Segeral (UIC)**

Tel: +33 (0)6 27 03 51 52

segeral@uic.org

Website : <https://events.uic.org/uic-asia-pacific-training-session-2019>

**Mr. Inchul Beom (KORAIL)**

alfmking@korail.com

